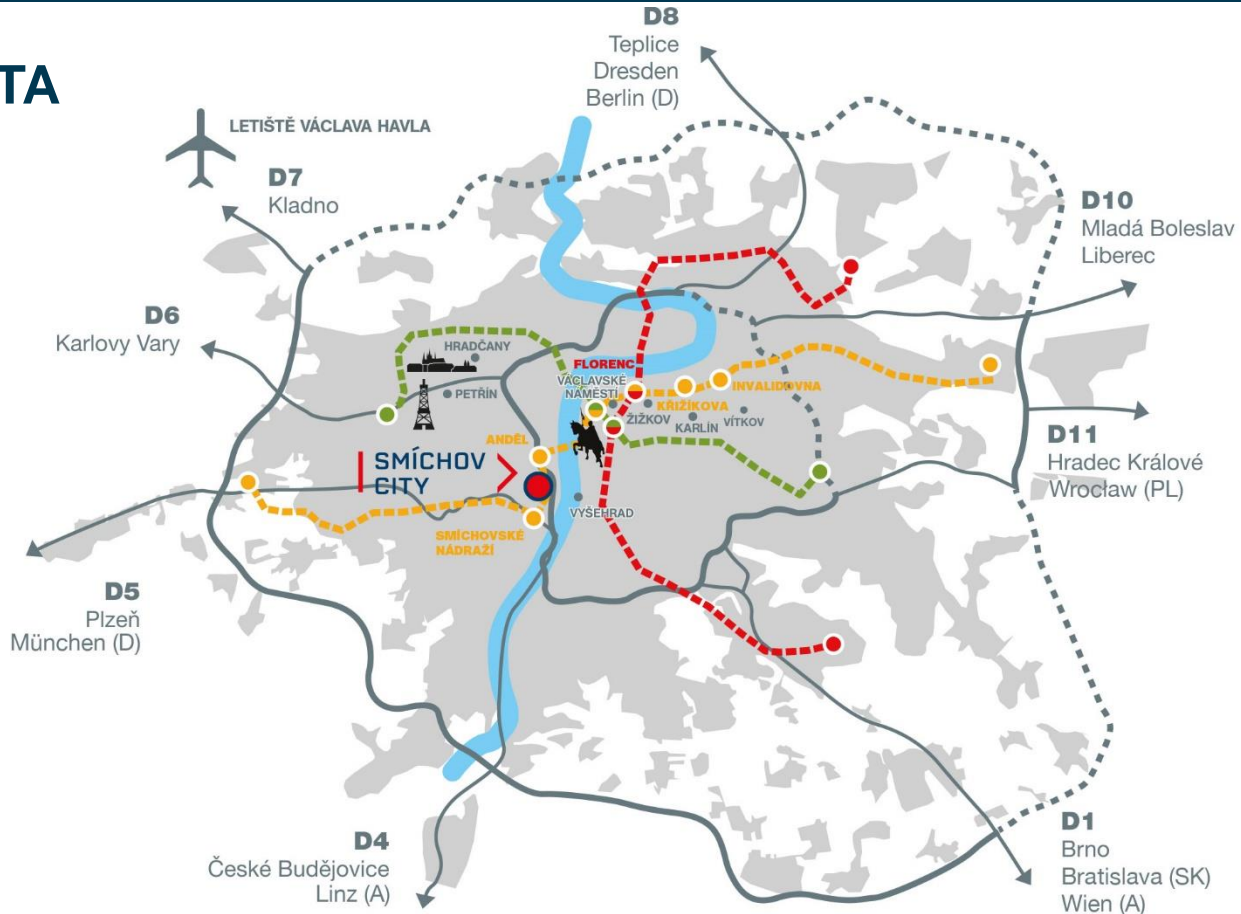
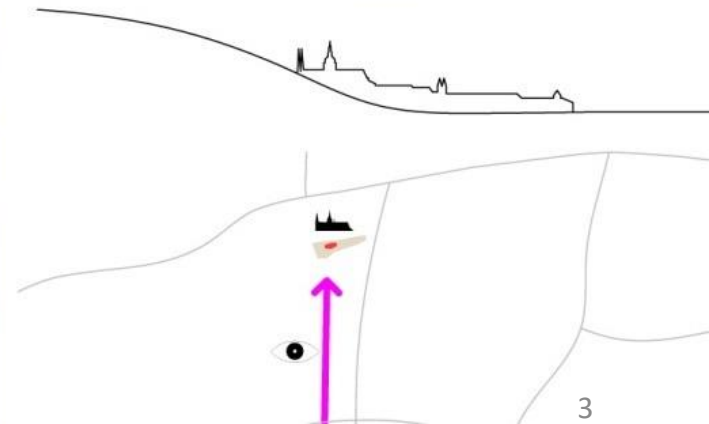
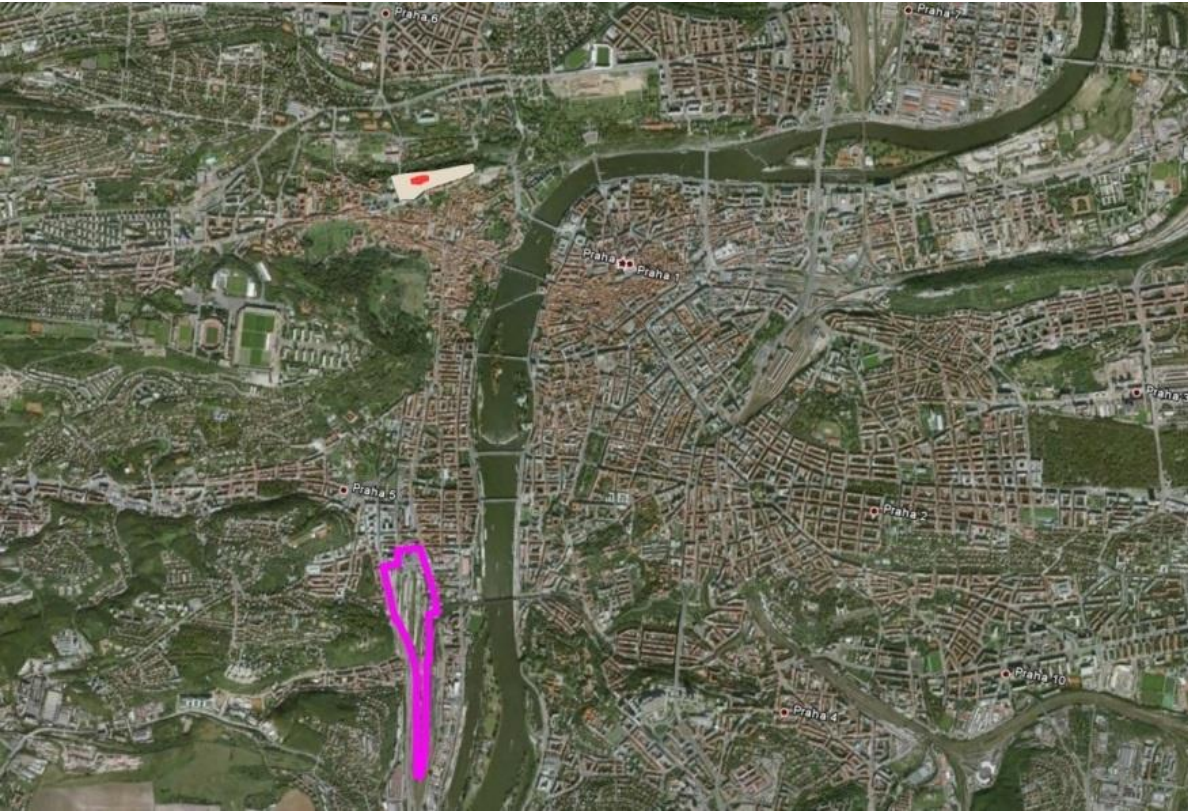




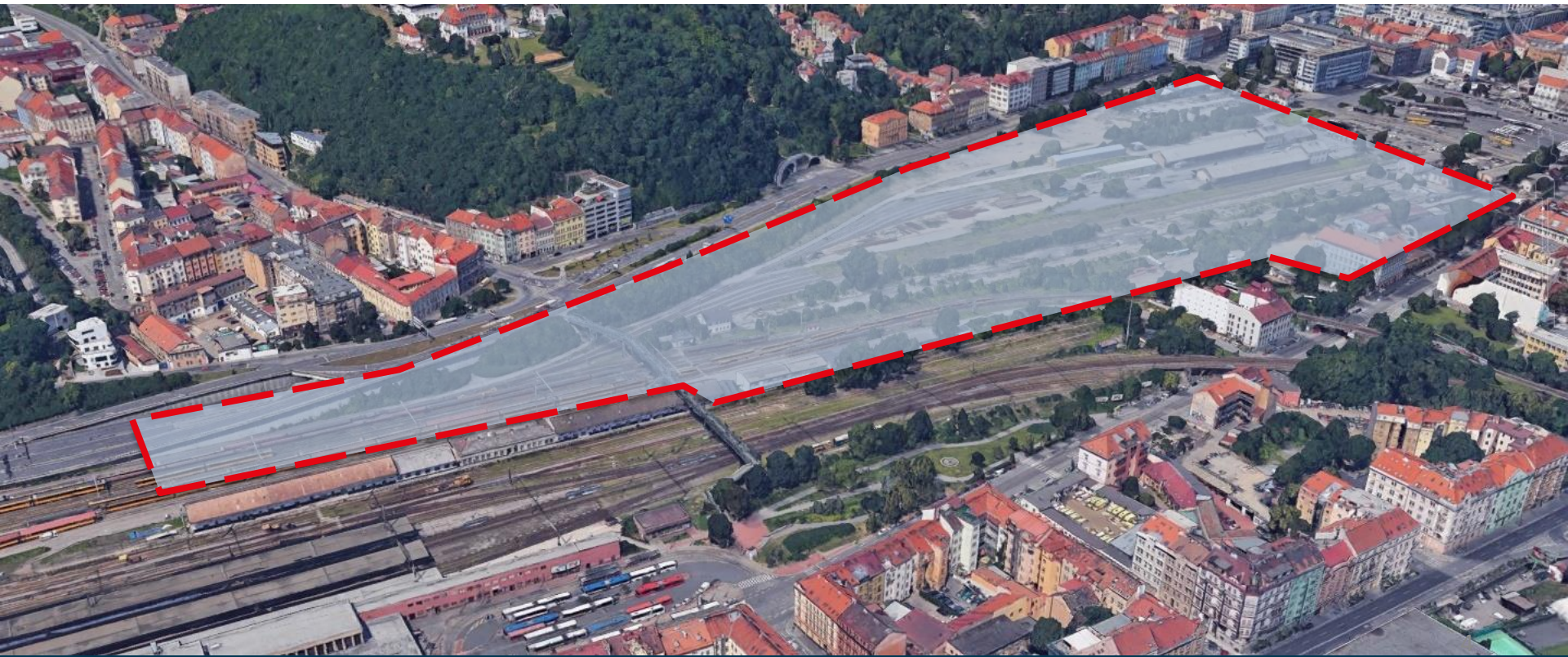
## > LOKALITA

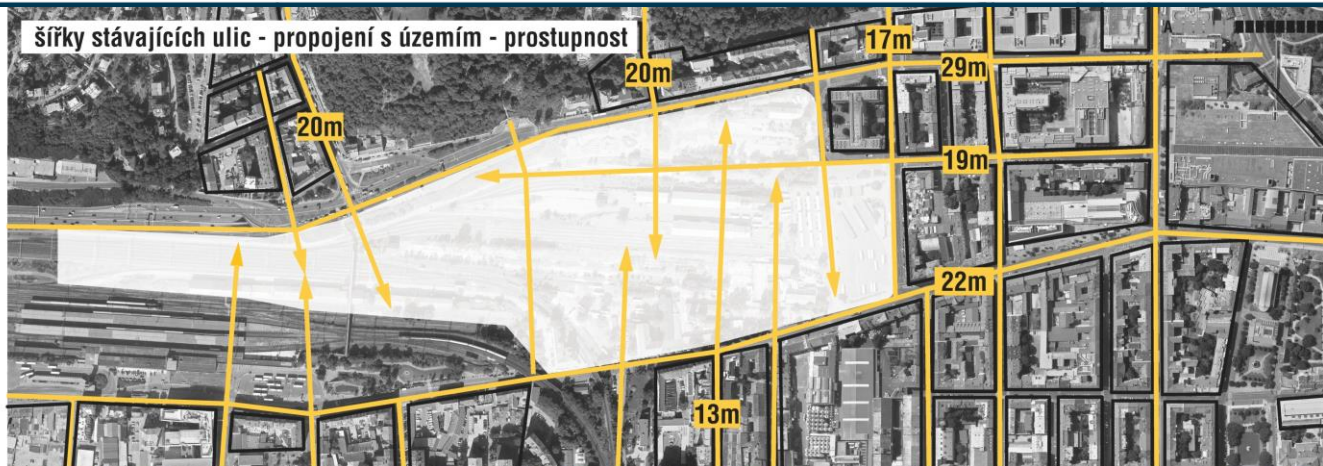


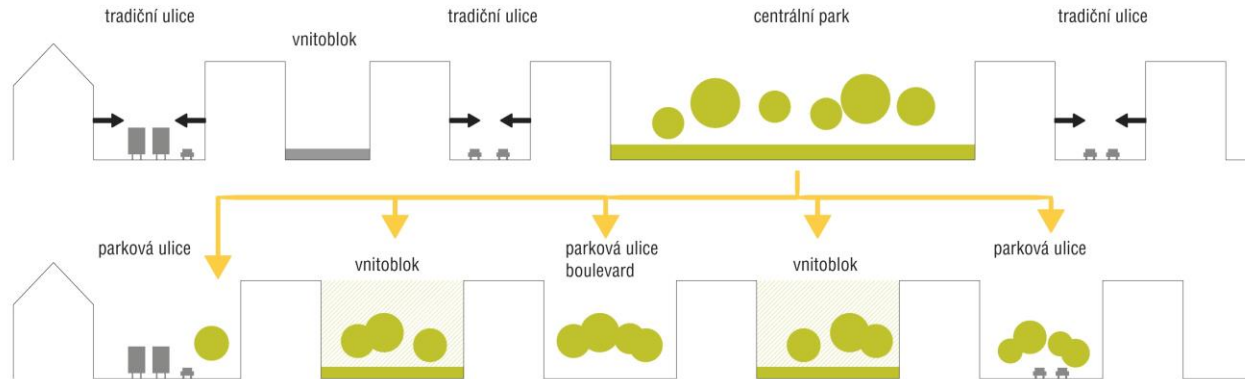
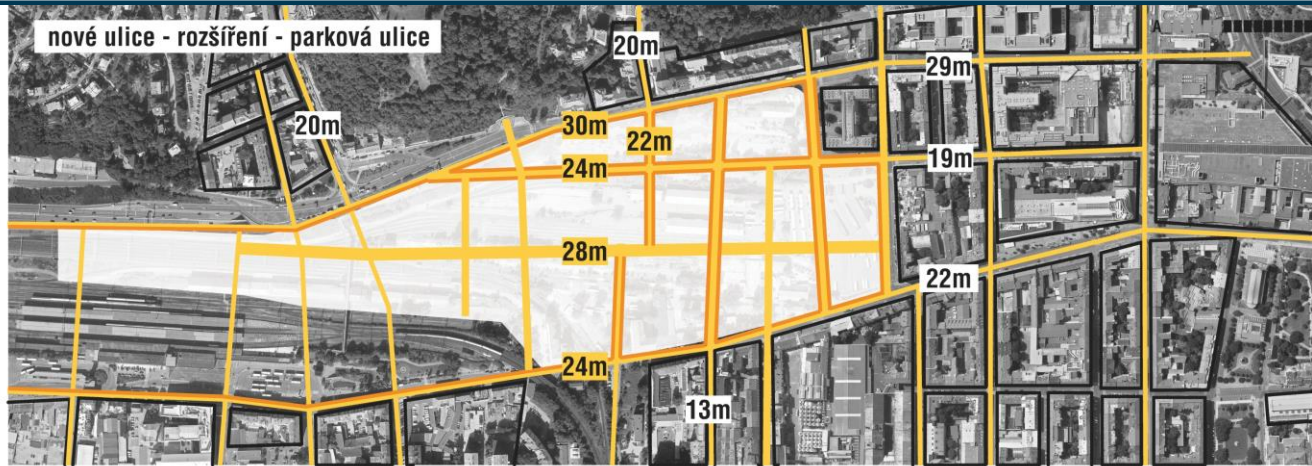
## &gt; ALTERNATIVNÍ CENTRUM MĚSTA NA LEVÉM BŘEHU VLTAVY




## > REGENERACE 22ha BROWNFIELDU





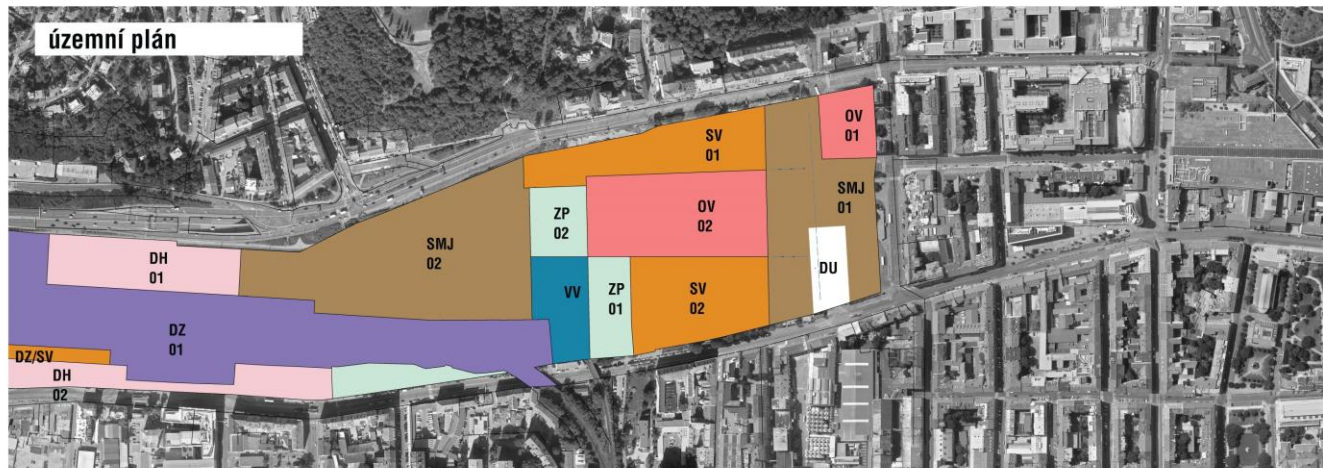




smíchOFF 

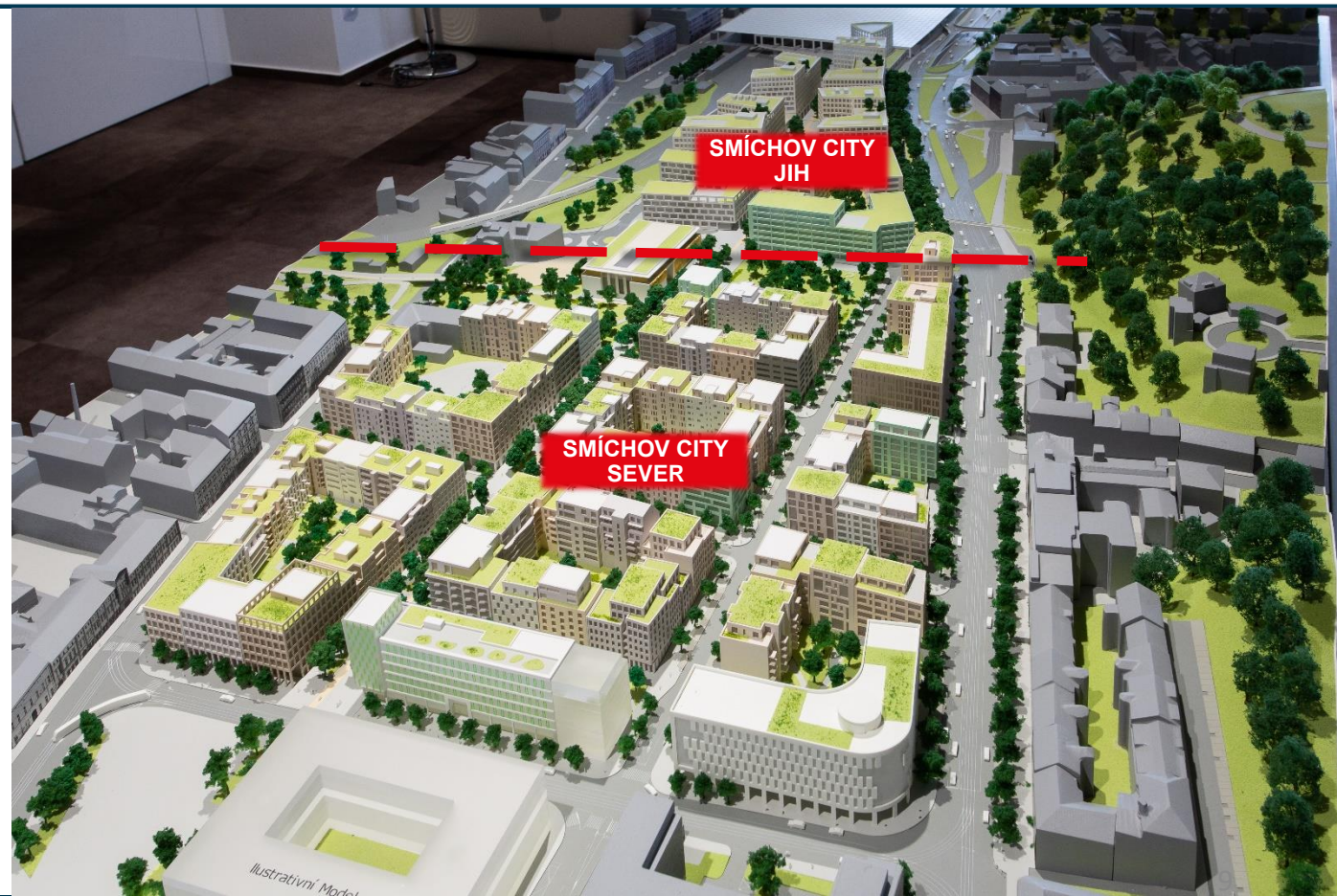


smíchON 





> SEVERNÍ  
POHLED

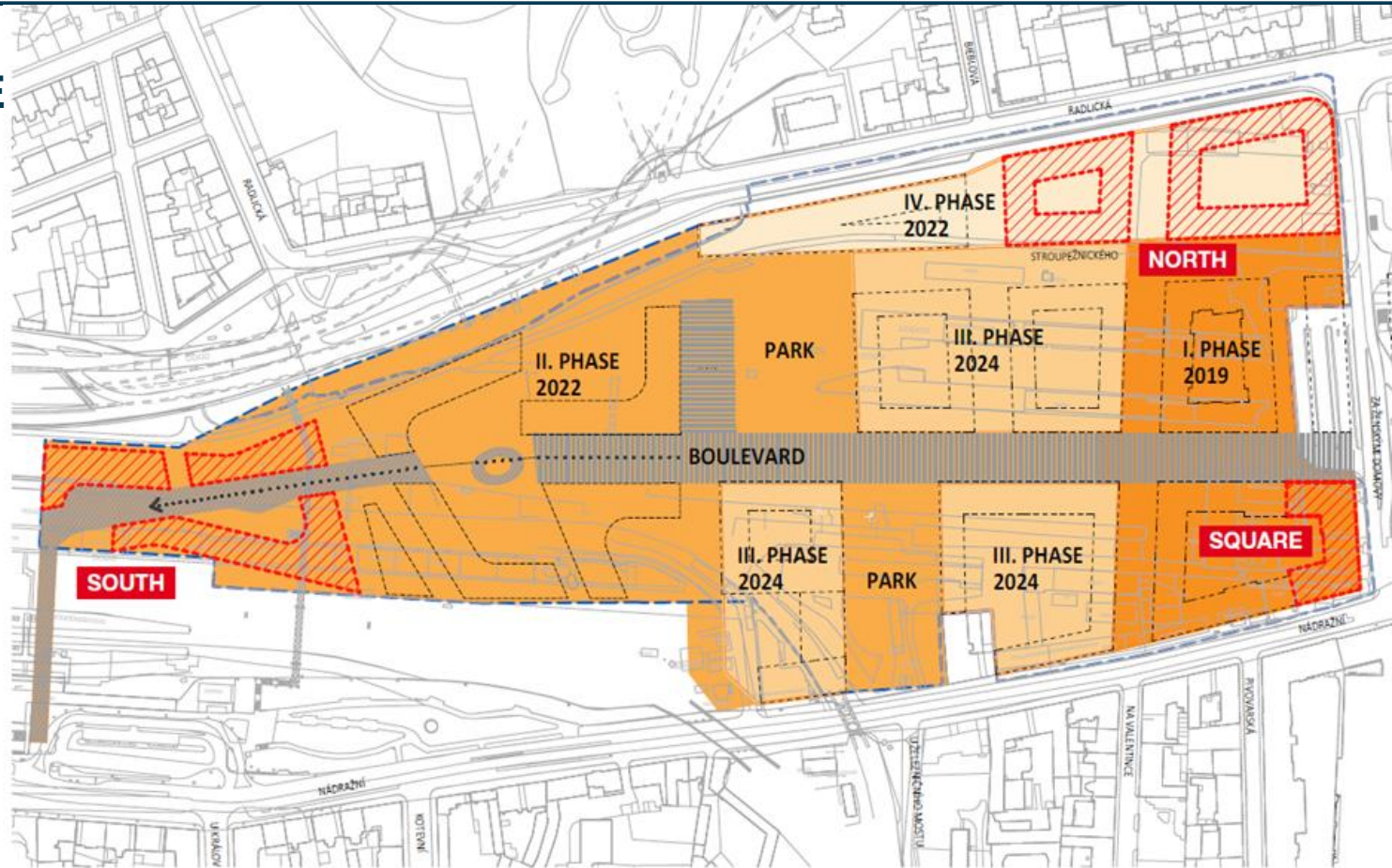


> JIŽNÍ POHLED



> **KANCELÁŘSKÉ  
LOKALITY**

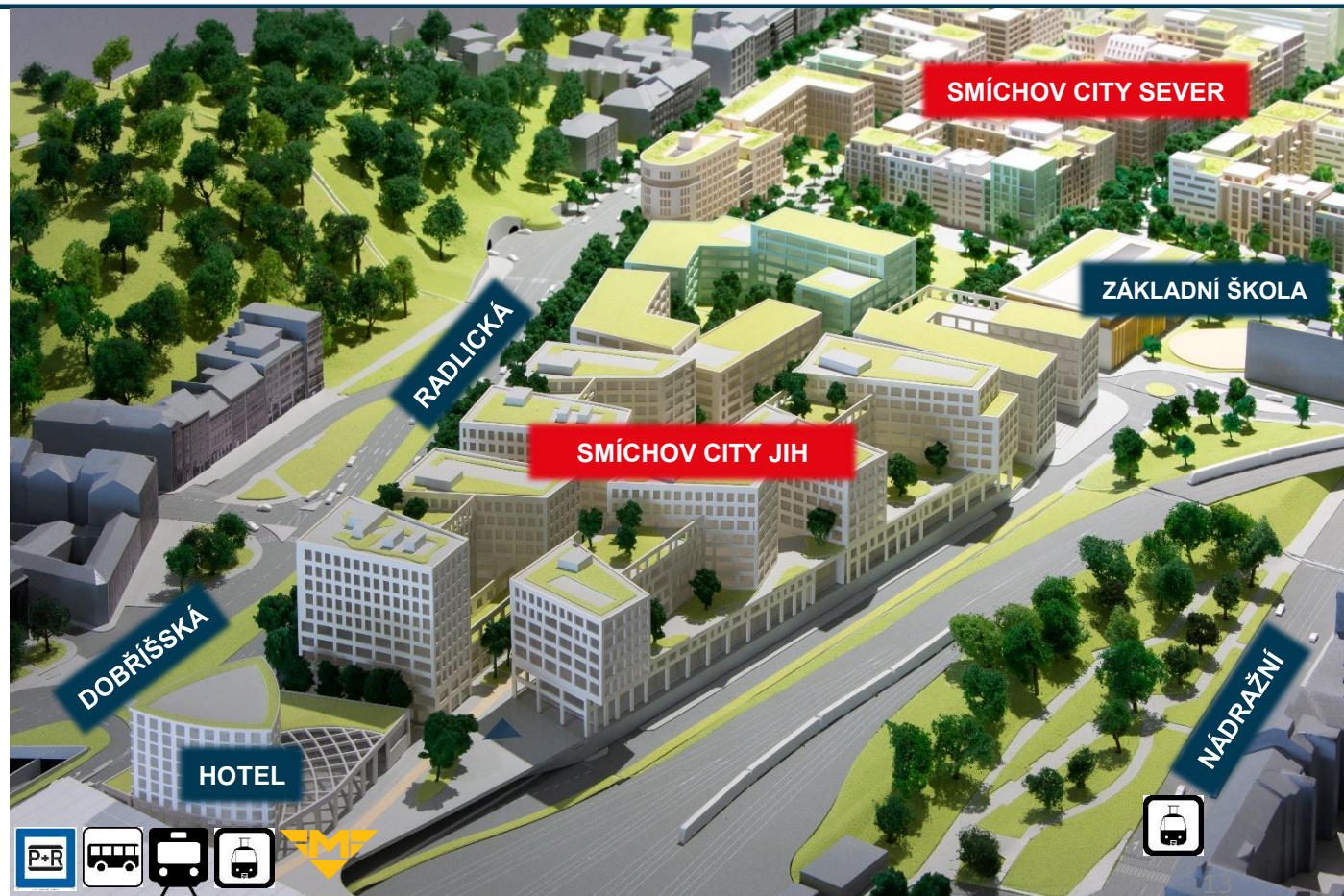
- > **SQUARE**
- > **SOUTH**
- > **NORTH**



# > SMÍCHOV CITY SEVER

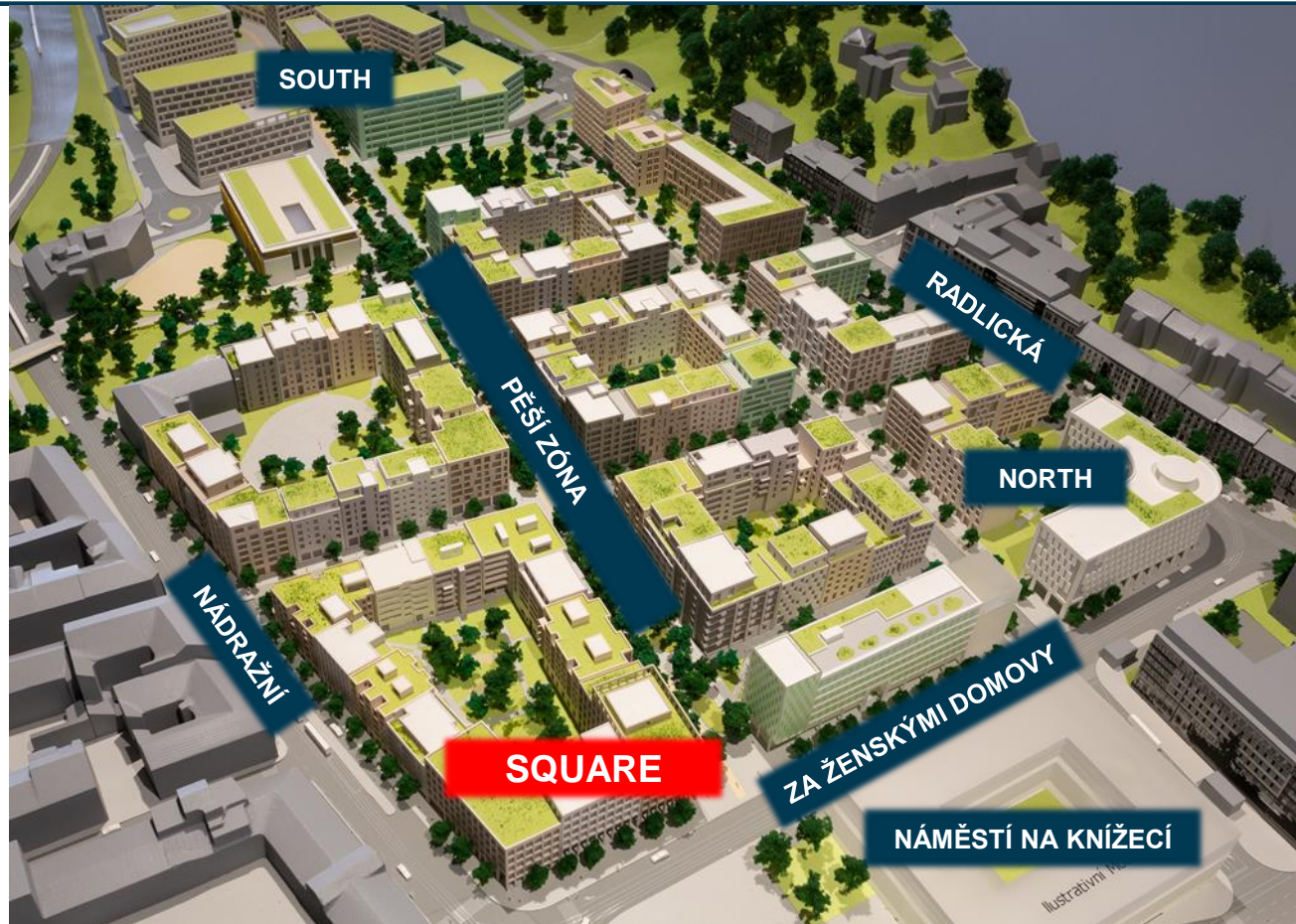


> SMÍCHOV CITY SOUTH



# > KANCELÁŘE SQUARE

- > NLA 9.623 m<sup>2</sup>
- > 74 PARKOVACÍCH STÁNÍ
- > DOKONČENÍ 2023
- > AAA CLASS
- > BREEAM EXCELLENT
- > PENB CERTIFICATE „A“



# > SMÍCHOV CITY – NA KNÍŽECÍ



## > KANCELÁŘE SOUTH

- > AAA CLASS
- > BREEAM EXCELLENT
- > PENB CERTIFICATE „A“
- > PROJEDNÁVÁNÍ UR
- > DOKONČENÍ 2025

### > CS CAMPUS

- > NLA 75.000 m<sup>2</sup>

### > OLOW 1 (WEST 1)

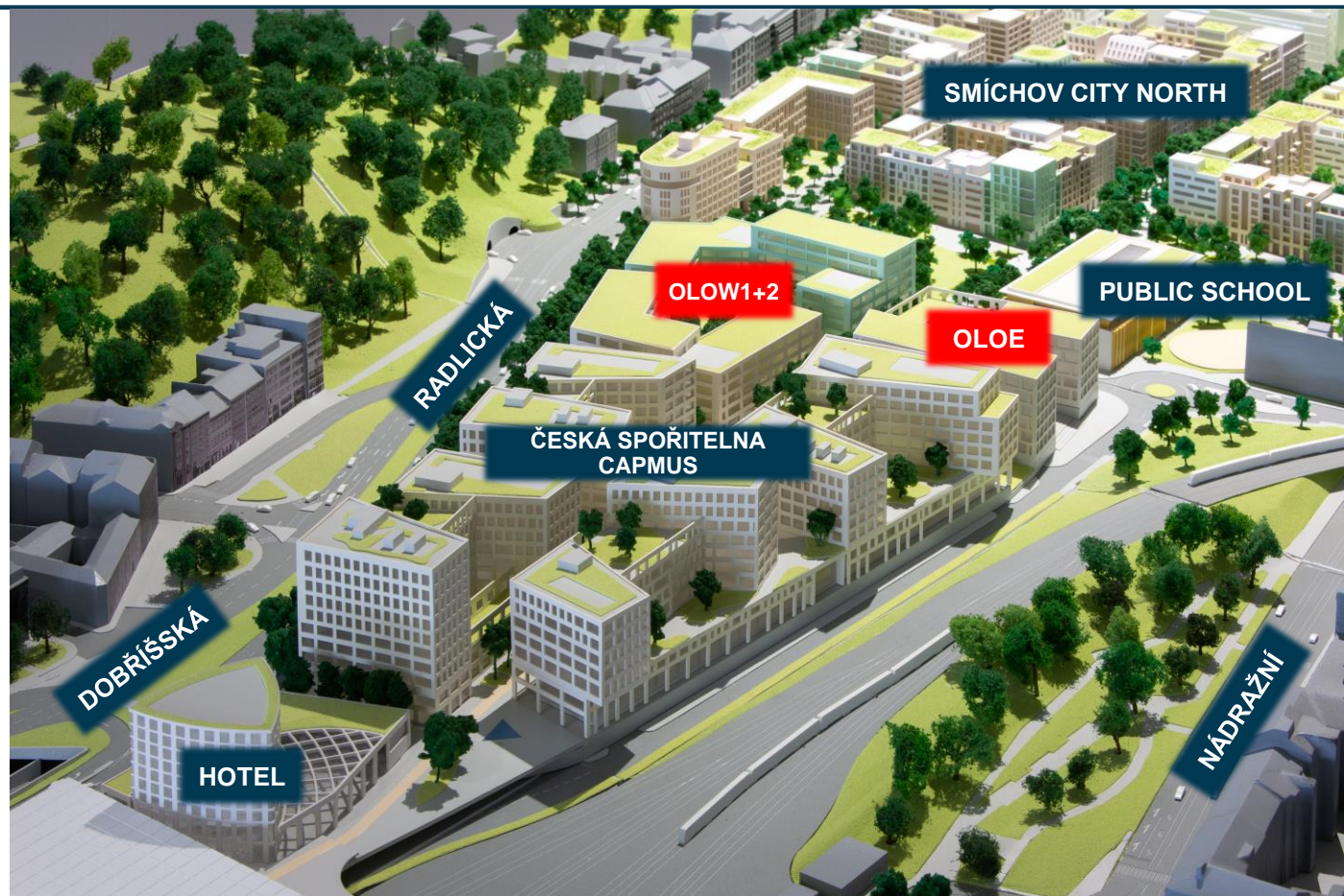
- > NLA 14.280 m<sup>2</sup>

### > OLOW 2 (WEST 2)

- > NLA 16.420 m<sup>2</sup>

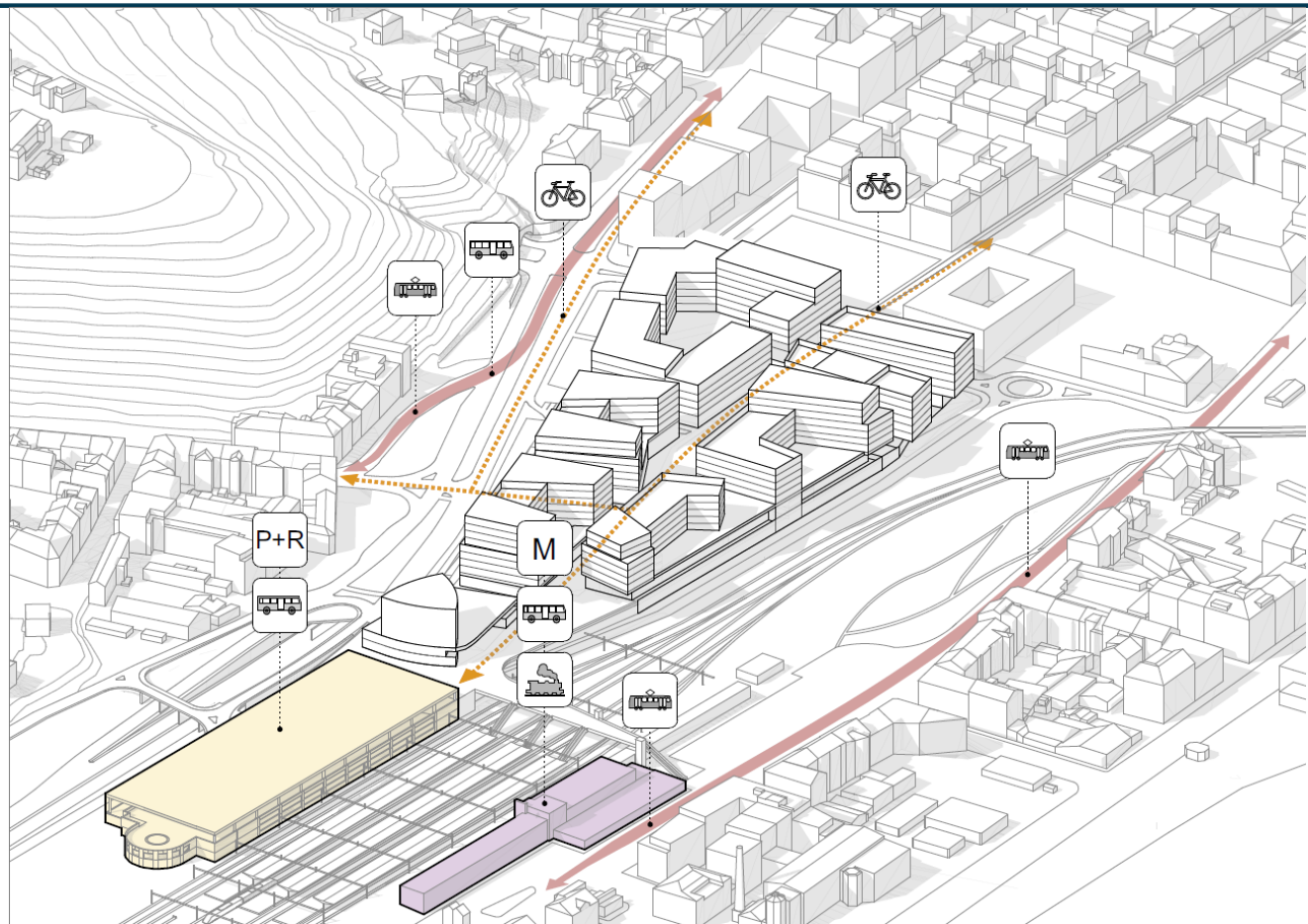
### > OLOE (EAST)

- > NLA 14.400 m<sup>2</sup>





> KANCELÁŘE  
SOUTH



# > SMÍCHOV CITY – 2. ETAPA – SOUTH

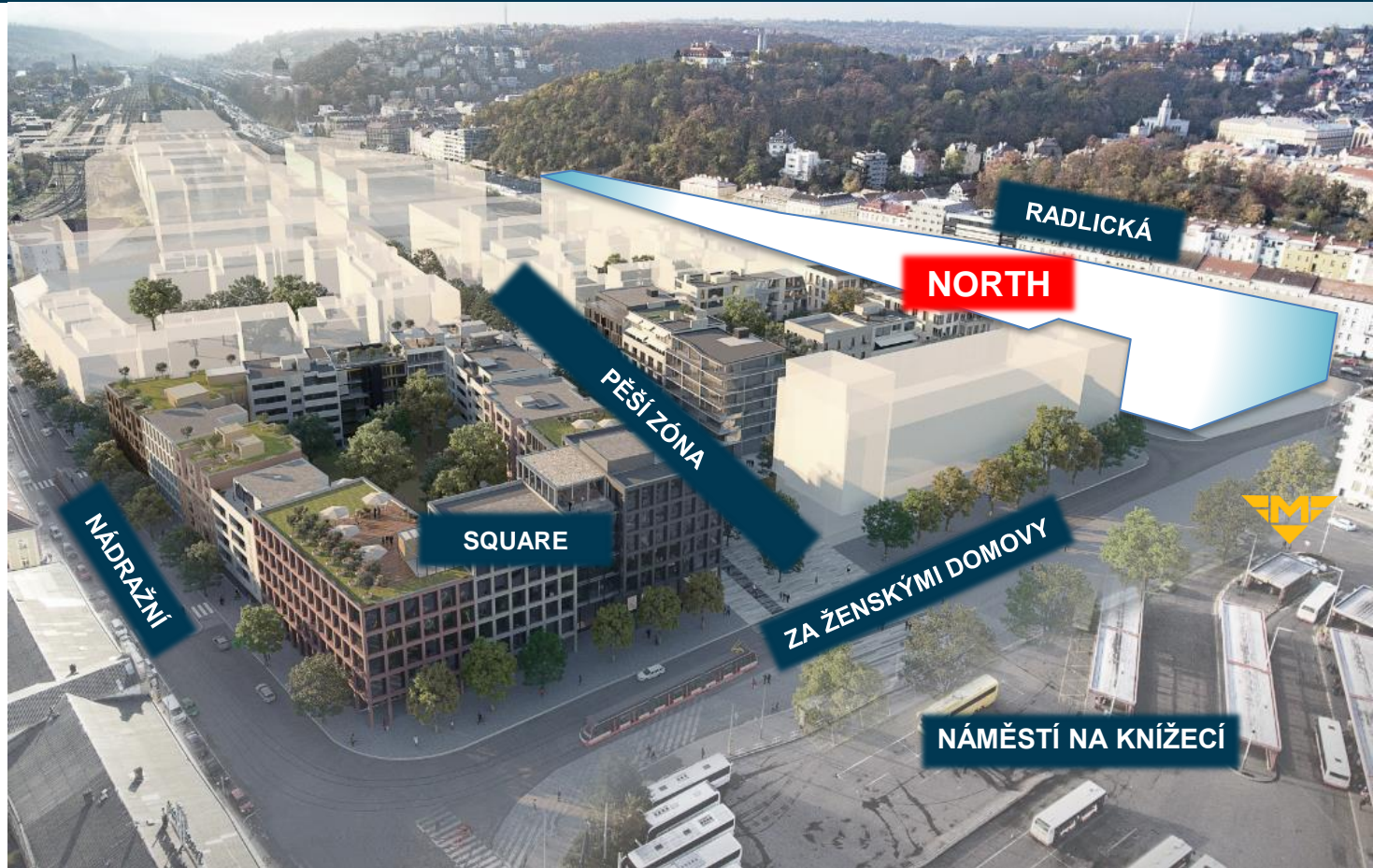


# > SMÍCHOV CITY – 2. ETAPA - SOUTH



# > KANCELÁŘE NORTH

- > AAA CLASS
- > BREEAM EXCELLENT OR LEAD GOLD
- > PENB CERTIFICATE „A“
- > ARCHITEKTONICKÁ STUDIE
- > DOKONČENÍ 2027
- > 60,000 M2 HPP



# > SMÍCHOV CITY – 4. ETAPA – RADLICKÁ



- > **Kontakt:**  
Sekyra Group a.s.  
U Sluncové 666/12a, 110 00 Praha 1
- > **Leoš Anderle, CEO**  
M: +420 234 005 551  
E: [landerle@sekyragroup.cz](mailto:landerle@sekyragroup.cz)